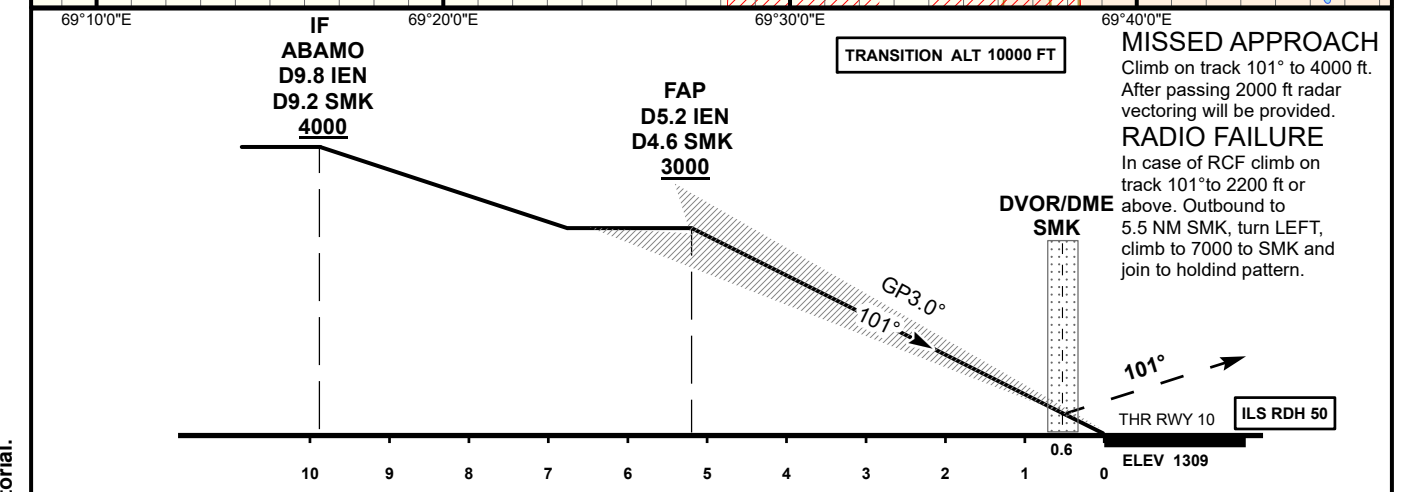


**SHYMKENT  
ILS/DME  
RWY 10**



Aircraft Category		A	B	C	D	DIST to THR DME IEN	NM	5.2	4	3	2	1	
Straight-in Approach OCA/H						DME SMK	NM	4.5	3.3	2.3	1.3	0.3	
	CAT I	1509(200)	1516(207)	1526(217)	1536(227)	ALTITUDE	FT	3000	2646	2322	1999	1678	
						HEIGHT	FT	(1691)	(1337)	(1013)	(690)	(369)	
DME IEN ZERO RANGED TO THR RWY 10													
Aerodrome Operating Minima DH ft x RVR (CMV)	CAT I												
						GS	Kt	80	100	120	140	160	180
						Desc. Rate( 5.2%)	ft/min	420	530	630	740	840	950

SHYMKENT  
ILS/DME

AERONAUTICAL DATA TABULATION

ILS approach to RWY10 from ABAMO, BINRA, TIROP	
Fix/point	Coordinates
DVOR/DME SMK	42° 22' 20.4"N 069° 26' 30.6"E
(FAP) D5.2 IEN, D4.6 SMK	42° 23' 36.3"N 069° 20' 36.9"E
ABAMO (IF) D9.2 SMK	42° 24' 53.9"N 069° 14' 33.3"E
BINRA (IAF) R311°, D10.6 SMK	42° 30' 04.6"N 069° 16' 38.1"E
TIROP (IAF) R250°, D10.7 SMK	42° 19' 42.2"N 069° 12' 33.8"E
THR RWY 10	42° 22' 09.24"N 069° 27' 22.27"E
IEN LOC	42° 21' 34.2"N 069° 30' 04.8"E